



*Your Partner for  
Manufacturer Direct  
Premium Surfaces*



# MANUFACTURING FACILITY USING THE FINEST ITALIAN TECHNOLOGY

**MDP (Manufacturer Direct Premium) Surfaces offers a genuine manufacture partnership with no middleman, offering unique product at highly competitive prices.**

Our approach is to seek strategic partnerships:

- We offer highly flexible creative solutions combined with a sense of urgency, to get the job done!
- Count on us for custom orders, cut-to-size, and an inventory to support high volumes.
- What makes us different is that we are a close knit group of colleagues, with a sense of humility, and a passion for keeping things simple, who strive to make relationships beyond just business.

• Vivid & Pure Patterns  
 • Superior Lustre  
 • Profound Depth

## What is it **Ultra High-Definition Quartz?**

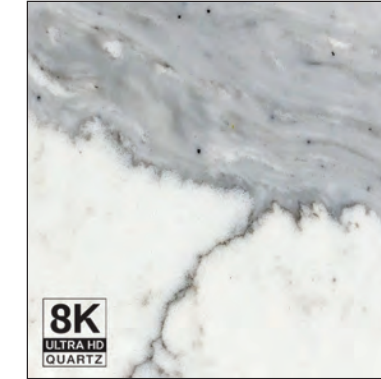
**8K ULTRA HD QUARTZ** was developed with a mindset to absolutely replicate the intricate veining of natural stone.

With a definitive quality focus, the resulting patterns are vivid and pure, with superior lustre and profound depth.

Standard Quartz



**Ultra High-Definition Quartz**



**1.1 Million Square Foot Factory**



**25+ Years in Business**



info@mdpsurfaces.com

1-888-850-8838

North American Buyers Warehouse:  
 808 Selkirk Ave, Pointe Claire,  
 QC H9R 3S3  
 (Monday to Friday 8:00am - 4:00pm EST)

mdpsurfaces.com

*Contact us to request your updated samples!*

# Galacatta Marmo

A soft elegant white/grey marble look and feel.

Size: Jumbo 63" x 126"  
Thickness: 2cm & 3cm

UHD-848

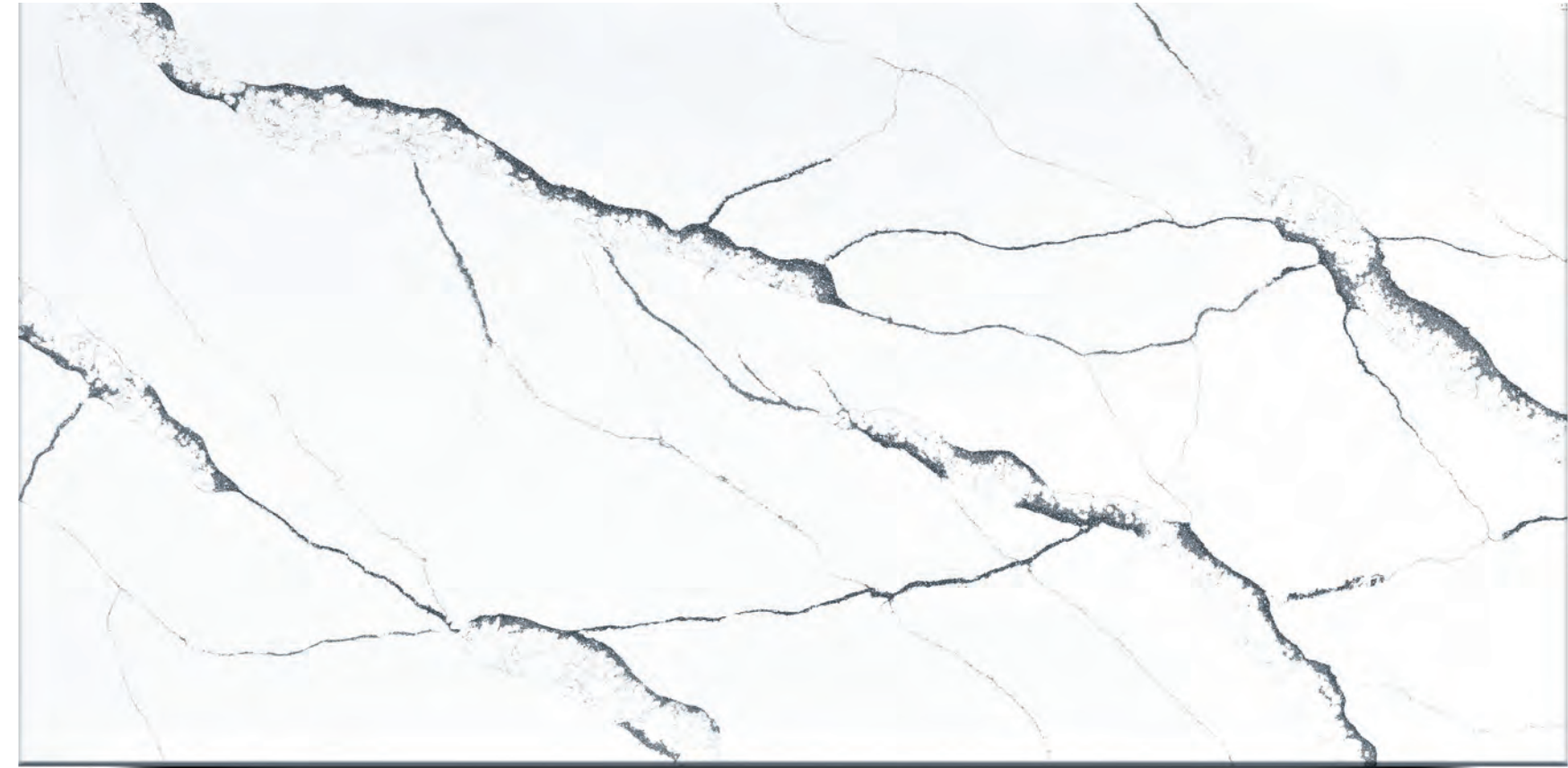


# Galacatta Nero

A soft elegant Calacatta black color veining style.

Size: Jumbo 63" x 126"  
Thickness: 2cm & 3cm

UHD-708



# Galacatta Vene Fino

A Calacatta style with slim grey veining throughout with a soft cloudy look.

Size: Jumbo 63" x 126"  
Thickness: 2cm & 3cm

UHD-718



# Niwole

A soft lace veining of light and dark gray flow throughout.

Size: Jumbo 63" x 126"  
Thickness: 2cm & 3cm

UHD-898



# Oro Luminoso

*A soft elegant Calacatta  
gold color veining style.*

Size: Jumbo 63" x 126"  
Thickness: 2cm & 3cm

UHD-728



# Brezza Oro

*A vibrant elegance of soft  
Calacatta with a fine  
touch of gold veining.*

Size: Jumbo 63" x 126"  
Thickness: 2cm & 3cm

UHD-738

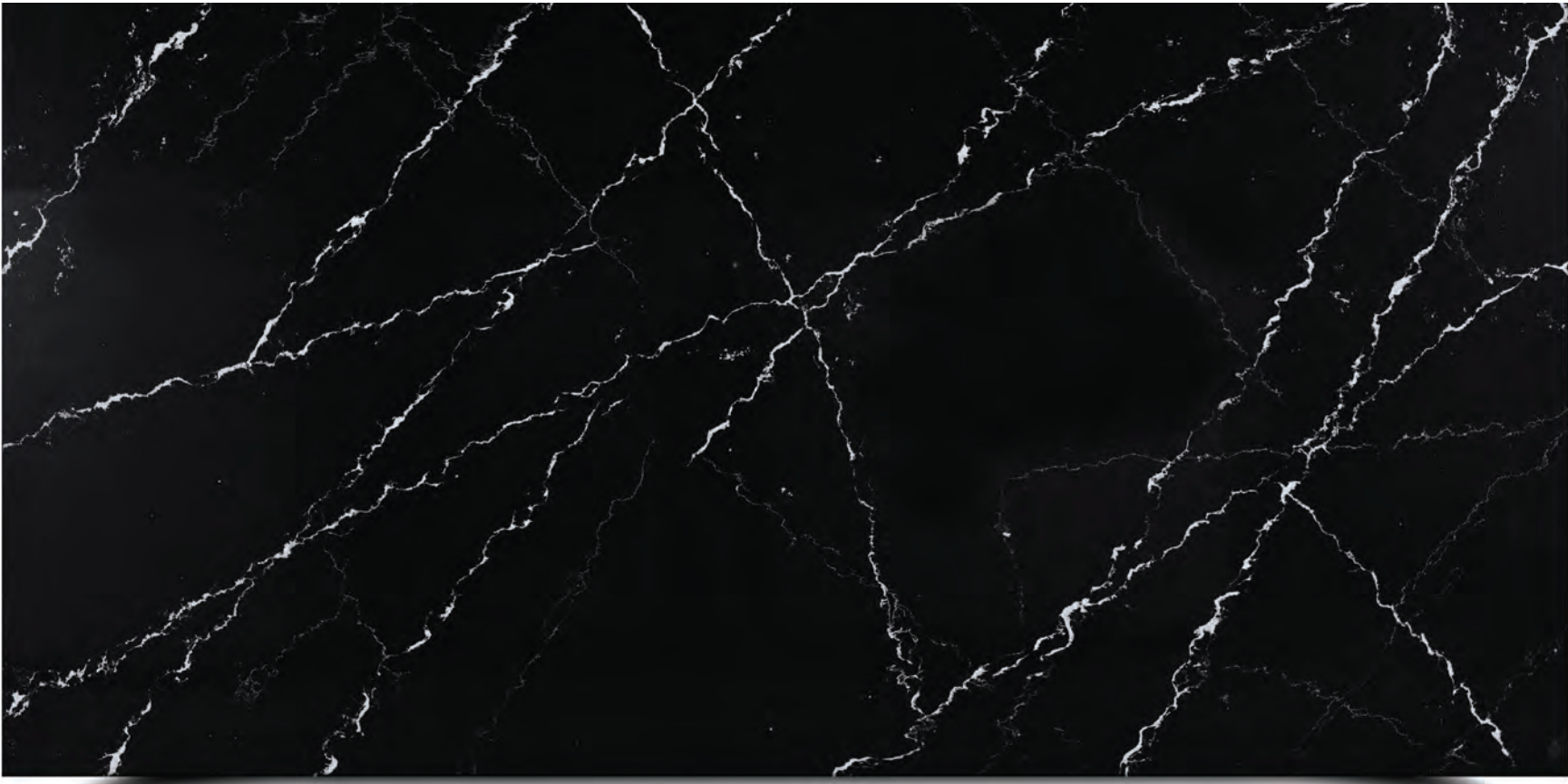


# Nero Marmo

*A Calacatta style with slim white veining throughout with a soft and smooth look.*

Size: Jumbo 63" x 126"  
Thickness: 2cm & 3cm

UHD-748



# Macchiato

*An espresso brown with soft gold veining throughout*

Size: Jumbo 63" x 126"  
Thickness: 2cm & 3cm

UHD-758

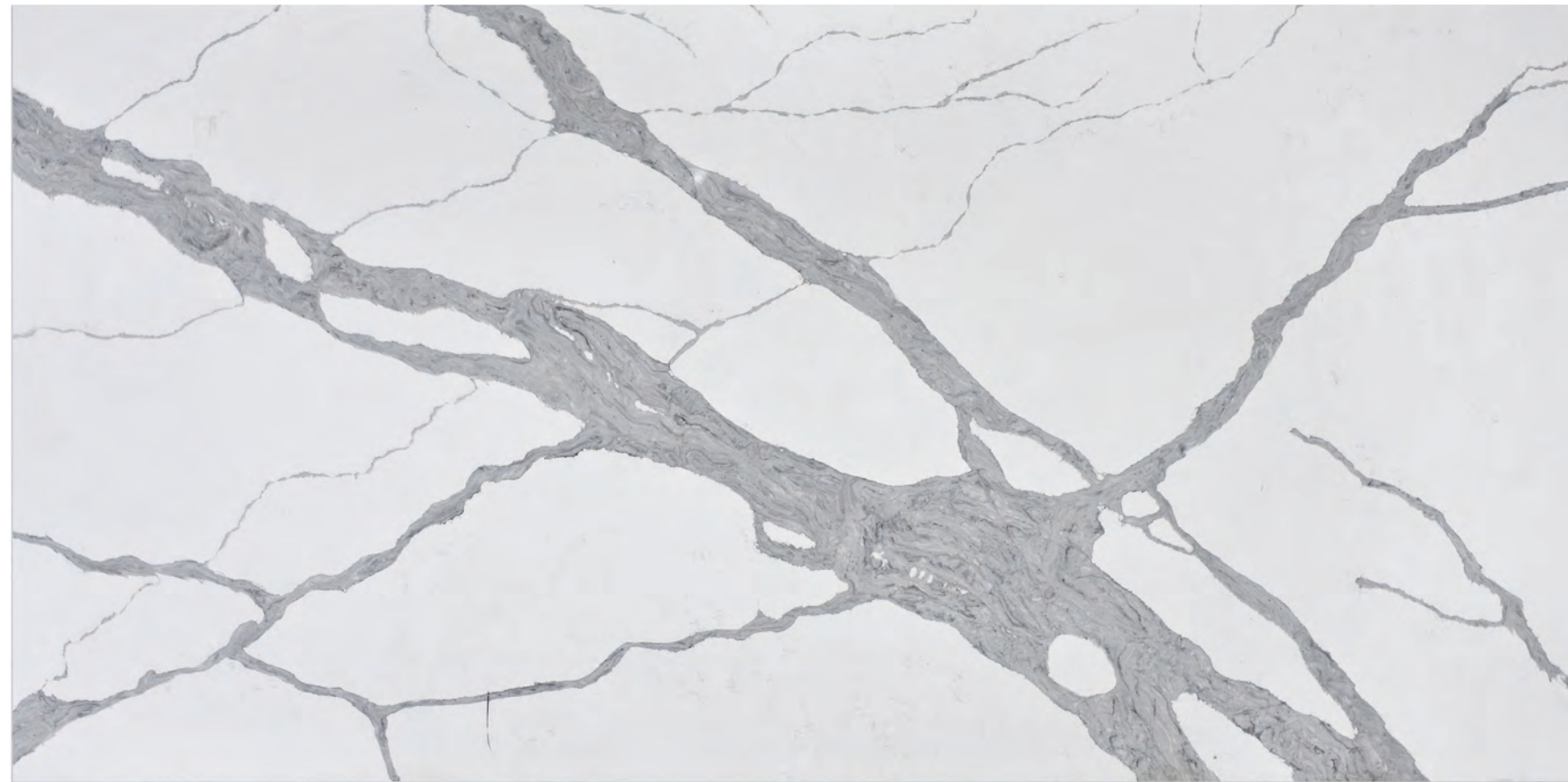


# Ultima Statuario

*Ultra fine grain white with a super high-definition broad diagonal grey veining pattern, superior lustre, profound depth.*

Size: Jumbo 63" x 126"  
Thickness: 2cm & 3cm

UHD-808



# Crema Statuario

*Ultra fine grain white with a high-definition characteristic diagonal and undefined grey veining pattern, superior lustre, profound depth.*

Size: Jumbo 63" x 126"  
Thickness: 2cm & 3cm

UHD-818



# Naturale Statuario

Ultra fine grain white with a high-definition diagonal classic grey veining pattern, superior lustre, profound depth.

Size: Jumbo 63" x 126"  
Thickness: 2cm & 3cm

UHD-838



# Bianco Ora

Ultra fine grain translucent white with a high-definition diagonal and undefined grey veining pattern, superior lustre, profound depth.

Size: Jumbo 63" x 126"  
Thickness: 2cm & 3cm

UHD-828





# Bella Staturario

*Bella Staturario is a light grey cloud effect color, soft smooth wave with superior lustre.*

Size: Jumbo 63" x 126"  
Thickness: 2cm & 3cm

UHD-868



# Carrara

*Ultra fine grain super-white with a subtle and undefined grey veining pattern, superior lustre.*

Size: Jumbo 63" x 126"  
Thickness: 2cm & 3cm

UHD-680



# Carrara Chiaro

*Ultra fine grain translucent white with a high-definition diagonal and undefined grey veining pattern, superior lustre, profound depth.*

Size: Jumbo 63" x 126"  
Thickness: 2cm & 3cm

UHD-684



# Carrara Crema

*Ultra fine grain cream with a subtle and undefined white veining pattern, superior lustre.*

Size: Jumbo 63" x 126"  
Thickness: 2cm & 3cm

UHD-689



# Argento

*Argento has a light grey marble effect pattern with superior lustre.*

Size: Jumbo 63" x 126"  
Thickness: 2cm & 3cm

UHD-878



# Pietra

*Pietra is a deep dark concrete look in a Antico (mat) finish with a smooth touch of diagonal white veining pattern. (Waiver required)*

Size: Jumbo 63" x 126"  
Thickness: 2cm & 3cm

UHD-685-L

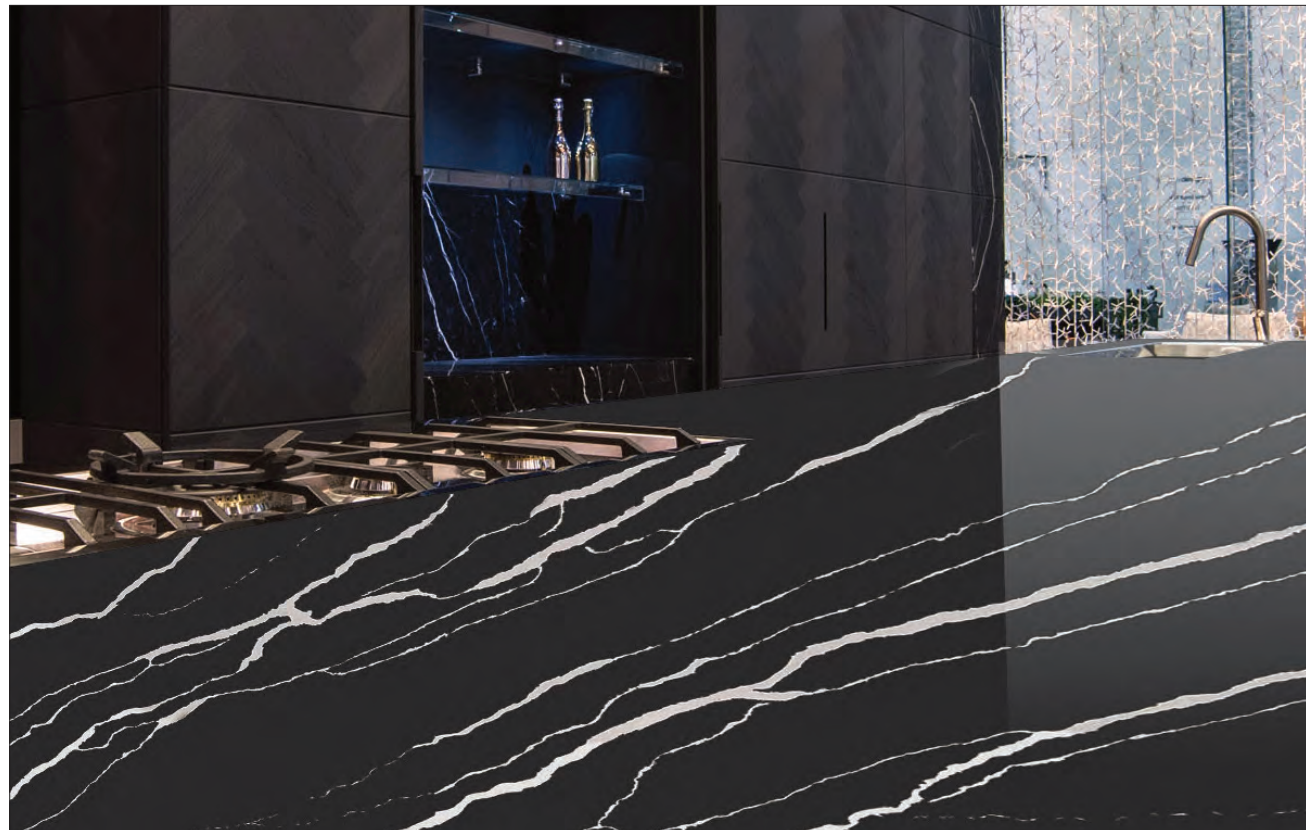


# Nero Statuario

Nero Statuario is a deep dark black color in a Antico (mat) finish with high-definition broad diagonal white veining pattern. (Waiver required)

Size: Jumbo 63" x 126"  
Thickness: 2cm & 3cm

UHD-858-L



# Aegean Grey

UHD-681



Fine grain light grey-concrete with an undefined seashell veining pattern, superior lustre.



# Oyster

UHD-688



Fine grain off-white with translucent two-toned beige undefined shell pattern, superior lustre.



# Noche

UHD-683

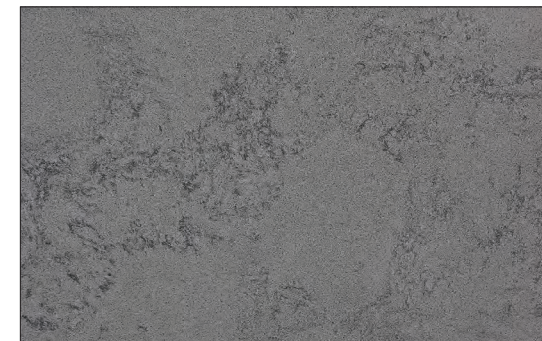


Fine grain medium grey-concrete with an undefined dark grey veining pattern, superior lustre.



# Moonstone

UHD-687

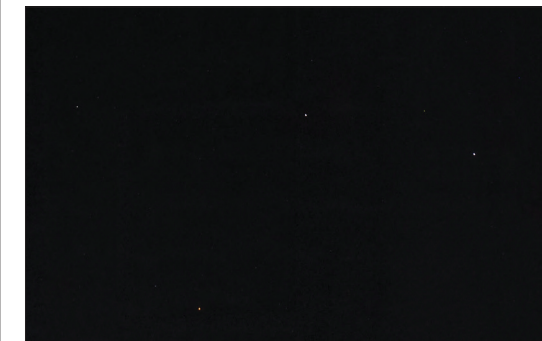


Fine grain medium dark grey-concrete with an undefined dark grey veining pattern, superior lustre.



# Sydney

UHD-305



A black color with reflective mirror particulates in a midsize black quartz pattern. (waiver required)



# Canella Café

UHD-691



A mid to dark brown color with smooth gold effect veining pattern in a superior lustre.



Size: Jumbo 63" x 126" Thickness: 2cm & 3cm

*Montreal*



Fine grain white, pure and uniform pattern, superior lustre.

UHD-300

*Ottawa*



Midsized particulate medium grey with reflection, pure and uniform pattern, superior lustre.

UHD-304

*Toronto*



Midsized particulate white, pure and uniform pattern, superior lustre.

UHD-301

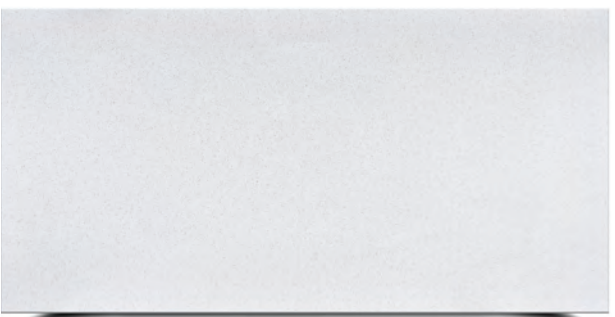
*Edmonton*



Midsized particulate medium grey, pure and uniform pattern, superior lustre.

UHD-307

*Vancouver*



Large particulate white, pure and uniform pattern, superior lustre.

UHD-302

*Regina*



Midsized particulate white with reflection, pure and uniform pattern, superior lustre.

UHD-308

*Calgary*



Midsized particulate light grey, pure and uniform pattern, superior lustre.

UHD-303

Size: Jumbo 63" x 126" Thickness: 2cm & 3cm

Technical Specifications

Test Items	Test Methods	Test Results
Water Absorption	EN 14617-1:2013	0.08%, Classification: W <sub>3</sub>
Apparent Density	EN 14617-1:2013	2368 kg/m <sup>3</sup>
Flexural Strength	EN 14617-2:2016	39.7 MPa, Classification: F <sub>3</sub>
Abrasion Resistance (polished)	EN 14617-4:2012	25.8mm, Classification: A <sub>4</sub>
Freeze and Thaw Resistance	EN 14617-5:2012	Flexural strength after freeze & thaw: 40.2 MPa, KM <sub>25</sub> : 101.3
Thermal Shock Resistance	EN 14617-6:2012	Mass loss: 0.02%, Flexural strength after thermal shock: 43.7 MPa Flexural strength loss: -10.8%
Impact Resistance	EN 14617-9:2005	9.01 J
Chemical Resistance	EN 14617-10:2012	Classification : C <sub>4</sub>
Linear Thermal Expansion Coefficient	EN 14617-11:2005	29.6 x 10 <sup>-6</sup> / °C
Slip Resistance (polished)	EN 14231:2003	SRV "dry": 51, SRV "wet": 10
Dimensional Stability	EN 14617-12:2012	Class: A, Vertical displacement: 0.02mm
Thermal Performance	EN 12664:2001	0.695 W (m•K)
Breaking Load at Dowel Hole	EN 14617-8:2007	4940 N
Dimensions, Geometric Characteristics & Surface Quality	EN 14617-16:2005	PASS
Surface Resistivity	EN 14617-13:2005	1.88 x 10 <sup>14</sup> Ω/sq
Volume Resistivity	EN 14617-13:2005	3.13 x 10 <sup>14</sup> Ω/sq
Reaction to Fire	EN 13501-1:2007 +A1:2009	Classification: A2-s1, d0
Substances of Very High Concern (SVHC)	SGS In-house method	PASS
Mohs Hardness	>6	No scratch: 6, Scratch: 7 Mohs hardness: 7
Stain Resistance	The animal oil and vegetable oil can be cleaned with wet cotton cloth within 24 hours	Class: A (polished finish)
Radioactivity	GB 6566-2010	Class: A

Countertop Material Comparison

Materials	Quartz Surface	Granite	Laminate	Solid Surface
Scratch Resistant	Excellent	Excellent	Good	Fair
Stain Resistant	Excellent	Good	Good	Excellent
Chip & Crack Resistant	Excellent	Good	Good	Excellent
Heat & Burn Resistant	Good	Good	Good	Good
Resistant to Household Chemicals, Acids & Solvents	Excellent	Good	Good	Excellent
Low Maintenance	Excellent	Good	Good	Fair
Non-Absorbent & non-porous	Excellent	Good	Good	Excellent
Mold & Mildew Resistant	Excellent	Good	Good	Good
Flexural Strength	Excellent	Fair	Good	Good
Colour Consistent	Excellent	Fair	Excellent	Excellent
Immune to Freeze & Thaw	Excellent	Excellent	Fair	Fair

Guidance to Contractors

Material	Guidance
Acid	Has strong resistant capability
Oil	Has strong resistant capability
Coffee & Tea	Has strong resistant capability
Drinks	Has strong resistant capability
Bleach	Do not use. If left for more than 12 hours the surface may become damaged
Cleaning Agents (ph<12)	Do not use. If left for more than 12 hours the surface may become damaged
Trichloroethylene	Use to remove oil stains and then apply water to clean
Acetone	Use to remove oil stains and then apply water to clean
Paint Dissolvent (diluent)	Use to remove oil stains and then apply water to clean
Fluoride Acid	Never use under any circumstances
Carlene	Never use under any circumstances
Caustic Soda	Never use under any circumstances
Paint Remover	Never use under any circumstances



## CTS Solution

The blueprint cut-to-size solution for fabricated quartz, granite and marble surfaces. We are your trusted partner.

### WE OFFER YOU:

- All manufacturing, quality control, logistics and coordination
- Quality assured, fast turnaround, less waste, no offcuts
- Color and pattern matched quartz, with full format slabs offered in different sizes (to maximize yield)
- Most selections of granite and marble are available
- Aggressively priced, enabling being awarded larger projects, profitably
- Reduced impact on local manpower and payroll
- Reduced wear and tear on your machinery and tooling
- 10 Year Commercial Warranty (material only, free from defects, etc.)

Final Seal of Approval remains in your control

### VALUE ADDED ADVANTAGES:

- Ideal for high-rises and multi-family units
- Ability to explore multiple solutions
- Facilitation of commercial project management – review of drawings
- Manufactured and engineered with efficiency
- Reliable and on-time

### 5 EASY STEPS:

**STEP 1:** We review and quote from your shop drawings

**STEP 2:** Control samples sent for your approval

**STEP 3:** Final details confirmed (Sink placement, faucet holes, finished edges, etc.)

**STEP 4:** You sign-off on all shop drawings with PO and 50% deposit

**STEP 5:** Final production of your project

### SPECIFICS:

- Minimum project size: 2000 ft<sup>2</sup>
- 2 week lead time to produce control samples
- 6-8 weeks to receive first shipment (after sign-off)  
50% Deposit (prior to production) / 50% on Delivery

Ordering extra material: Typically, extra slab material (equivalent of 5%) needs to be ordered along with finished product, just in case of breakage or if extra material is required for local fabrication. Adding extra dimensional lengths: Recommended when there may be a variance from actual shop drawings. Local trimming and finishing would be required.



## Care and Maintenance

### EVERYDAY CARE

On a routine basis, simply wipe the surface using a clean, soft cloth or sponge with a mild dish-soap diluted in warm water. Afterwards, thoroughly rinse with clean water and dry with soft cloth or paper towels to prevent spotting. Polished 8K

Ultra HD Quartz has low porosity and, therefore, does not require the use of a surface sealant and is naturally resistant to surface staining from cooking oils, wine, coffee, etc. In most cases, a mild dish-soap and water is enough to keep your 8K Ultra HD Quartz looking clean. For best results, clean liquid spills and dried foods as soon as possible.

### STUBBORN STAINS AND MARKS

Apply a non-abrasive household cleaner and rinse to remove residue. For dried liquids, foods and any harden marks, remove by gently scraping the surface with a plastic putty knife or a non-abrasive Scotch-Brite® pad and then use a damp cloth to lift any residual stains and marks. NEVER use Methylene Chloride or cleaners containing any alkaline materials.

NOTE: Scraping by a metal blade on the surface will abrade and leave a gray mark on the surface.

### PREVENTING DAMAGE

On a routine basis, refer to “Everyday Care” section.

**HEAT:** Although 8K Ultra HD Quartz is heat resistant, all stone products can be damaged by sudden and extreme temperature changes, especially near the edges. Always use a hot pad or a trivet with rubber feet to protect 8K Ultra HD Quartz.

**SCRATCHES:** 8K Ultra HD Quartz is highly resistant to scratching. However, avoid damage by refraining from using knives, screw drivers and other sharp objects directly on the surface. Never cut or chop directly on an 8K Ultra HD Quartz - always use a cutting/chopping board when preparing foods. Avoid standing on countertops or dropping heavy objects on the surface.

### CHEMICALS:

- Avoid using cleaners that contain Pine Oil – without very thorough rinsing, these products may leave behind a stubborn residue. The pine oil will attract and holds dirt on the surface, eventually reducing the cleanliness of the surface and affecting its appearance.
- Avoid using highly aggressive cleaning agents such as oven/grill cleaners and dishwasher polishing agents that have high alkaline/pH levels (pH 8.5 or higher).
- Avoid using abrasive scrubs and cleaners that contain either soft or hard abrasive particles.
- Avoid using cleaners that contain xylene, toluene, potassium hydroxide or caustic soda.
- Avoid exposing 8K Ultra HD Quartz to strong chemicals such as paint removers, furniture strippers containing trichlorethane or methylene chloride.

\* Use of certain names is intended only to show a type of cleaning product.

This does not constitute an endorsement or support for that product.

Nor does the exclusion of any certain name product imply its insufficiency



[info@mdpsurfaces.com](mailto:info@mdpsurfaces.com)



1-888-850-8838



808 Selkirk Ave, Pointe Claire  
QC H9R 3S3



[mdpsurfaces.com](http://mdpsurfaces.com)